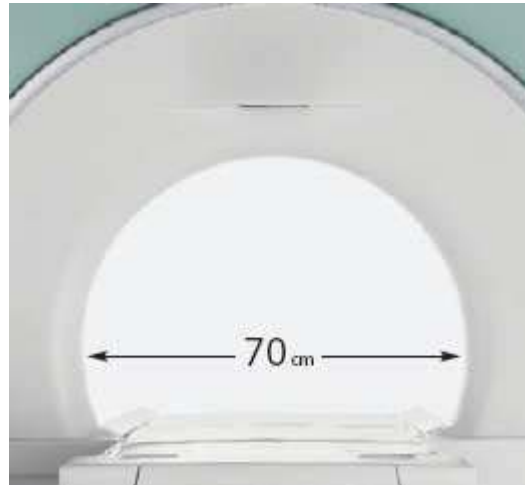


## THE EASTSIDE'S ONLY 1.5T SHORT BORE, LARGE OPENING HIGH FIELD MRI

Washington Imaging Services is committed to providing our referring clinicians and their patients with the most sophisticated medical imaging equipment available today. We have taken a quantum step forward in diagnostic imaging by bringing the new Siemens MAGNETOM Espree™ to our [Bellevue](#) facility.

### Expansive Comfort for ALL—Claustrophobic, Pediatric, Larger Patients

Providing large and claustrophobic patients high quality MRI scans has been a technical challenge because all open MRI systems have been low strength—0.25 to 0.7 Tesla units. The Espree, however, is the first large opening, short bore MRI scanner to combine high field 1.5 Tesla power with an unprecedented level of comfort to all patients due to its compact length of only 125cm and expanded 70 cm (28 inch) inner diameter.



### Espree Advantages & Innovations for Exceptional Imaging

The MAGNETOM Espree is based on Siemens' new Tim (Total imaging matrix) technology, the most innovative RF-technology integrated with a radically different matrix coil design. It was recently recognized as one of the world's leading advances in MRI. The Tim technology provides our radiologists with a level of flexibility, accuracy and speed that has only now been realized in the world's first 1.5T high field open MRI.

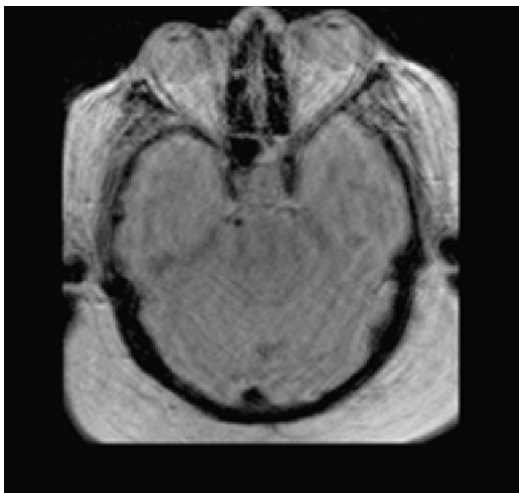
### Washington Imaging Services' New Espree MRI Offers These Patient Advantages:

- A remarkably short 125 cm bore length allows over 60% of typical exams to be performed feet first, with the patient's head remaining outside the magnet to ease feelings of claustrophobia.
- Patients up to 550 pounds can benefit from the advanced diagnostic capabilities of Espree's 1.5 T high field imaging.
- With up to 100% more signal-to-noise ratio (SNR) provided by Tim's high density matrix coil elements, our new Espree will provide pinpointed accuracy—both on a

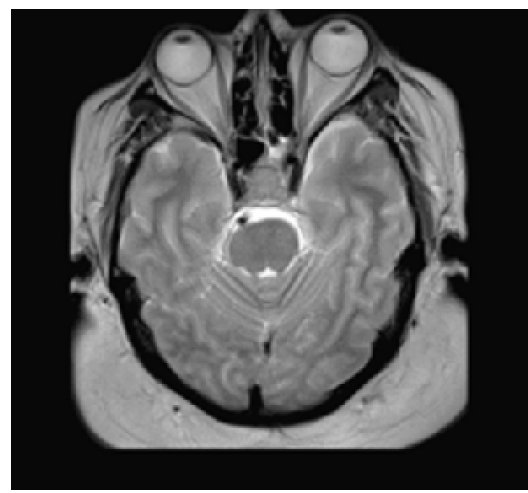
single, tiny lesion or focusing on multiple organs, joints, the entire central nervous system or even the whole body.

- Patients experience much shorter scan times and exams without sacrificing spatial or temporal resolution in the process.
- The need for patient repositioning and coil changes is completely avoided, thanks to the Espree's tremendously innovative RF system and matrix coils.
- Shorter exam times and increased patient comfort allow clinicians to fully address disease states that accompany obesity, such as lumbar spine disk herniations, knee problems and cardiovascular disease.
- Cutting edge motion correction with BLADE facilitates exceptional imaging for any organ (head, spine, abdomen), any contrast (T1, T2, Dark Fluid), any orientation and for any patient. Below is a 241 kg/530 lb patient.

Without BLADE



With BLADE



- MAGNETOM Espree is the only open bore MRI that combines expansive patient comfort with no compromise in scan power. The ultra-short MRI system provides a field of view up to 205 cm. The 'wholeSPINE' application provides a complete spine exam in three steps and inline composing.

